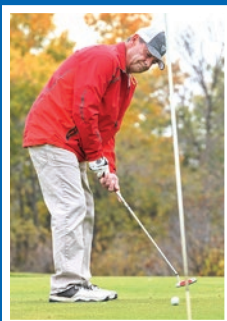


Killarney

M A N I T O B A

There's no better place



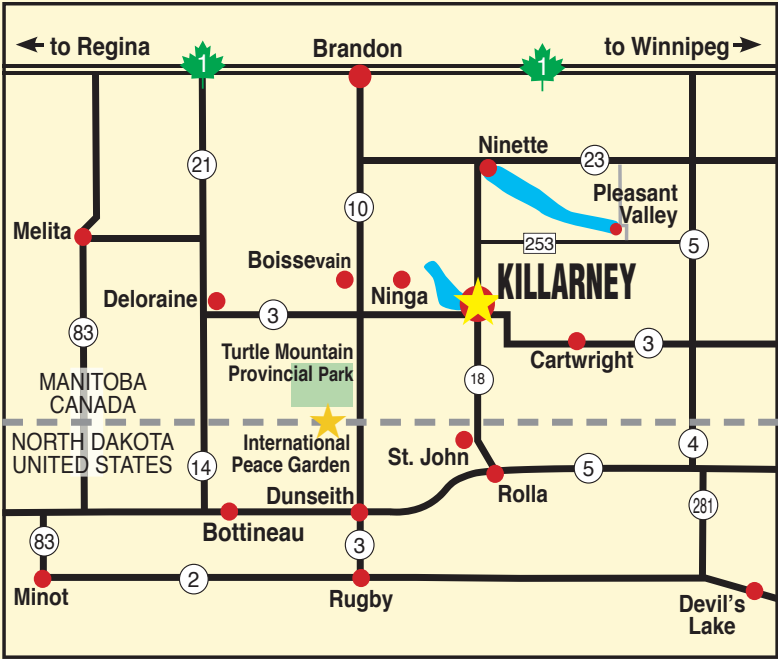
VISITOR & RELOCATION GUIDE

How to find us



Killarney is situated in southwest Manitoba on Highway 18, beside beautiful Killarney Lake and near the majestic International Peace Garden.

- Less than a 10 minute drive from the Canada-US border.
- Population of just 3,500 - with all the city comforts.



Travel Manitoba Tourist Information:

Tourist information is available at the Heritage Village off Highway 3. Brochures are available at the Killarney Place mall kiosk.

For more information about Killarney contact:

725 Broadway Avenue
Box 820, Killarney, MB R0K 1G0
Ph. 204-523-8920
or visit www.killarney.ca



Printed and published by
THE KILLARNEY GUIDE
www.killarneyguide.ca

CONTENTS

Welcome	3
Town Tour	4
Events Calendar	6
Parks & Beaches	7
Trails	9
Recreation	10
Activities & Attractions	13
Accommodations / Dining	17
Health Care	20
Education & Childcare	22
Worship	23
Retirement or Relocation	24
Shopping & Services	25
Agriculture	31

Killarney

The Emerald Isle Oasis

Nestled along the shores of beautiful Killarney Lake, the prairie oasis of Killarney offers ample opportunity to relax and enjoy the amenities. Golf enthusiasts will find paradise in this popular resort town, well known for its traditional links style 18-hole golf course, complete with lush green fairways that border the lake. Winter recreation abounds with scenic snowmobile and cross-country ski trails, and the Shamrock Centre recreation complex.



Welcome to Killarney



JANICE SMITH
Mayor

This is your invitation from Mayor and Council, to come visit the Municipality of Killarney-Turtle Mountain! Upon your arrival to our beautiful town, you will be greeted by a friendly community surrounded by abundant farmland, and situated around a scenic lake for your enjoyment.

You will find Killarney has many amenities that make us a vibrant destination and a desirable place to relocate. The Shamrock Centre is the heart of our municipality, with an ice rink, curling club, bowling lanes and a fitness centre. It also serves as our community hall, with the capacity to host up to 600 people.

If you golf, we have the Jewel of the South. If you enjoy the outdoors we have walking trails, and we are near the beautiful hiking available in the Turtle Mountains. Killarney Heritage Home for the Arts and our museums will complement your visit. The business sector will meet all your needs, with many retailers who work hard to keep Killarney prosperous. If it is just for the day, or you are staying awhile, I am sure you will agree...There's no better place!



Welcome to Killarney-Turtle Mountain.

If you have any questions or need assistance, please contact my office at info@doylepiwniuk.ca, or give us a call at 1-204-552-0130.

DOYLE PIWNIUK
MLA for Turtle Mountain



A quick tour through town

Killarney's Broadway Avenue.

Welcome to Killarney – a small town with a big heart.

And a lot to do. The kids can enjoy the splash park, and you can take in some serious golf, launch a boat, swim at the beach, or set up in a number of leafy campsites. There are restaurants, a liquor store, a large food store, and pharmacy, and of course our extensive health centre services – to name just a few of the town's many amenities. There is even a drive-in theatre located just south of town on Highway 18.

Here's how to find some of them.

From Highway 3: You can pull north into Killarney from Hwy 3 onto Water Avenue. The town's historic water tower is visible just to the west at this turn.

As you travel up Water Avenue, you will see the Emerald Isle Motel on your left, and the popular, retro-1950s Beach Hut diner (complete with mini-golf) on your right.

Right across the street is the leafy and forested Erin Park, with its sandy beach, splash park, BBQ pits (with firewood), washrooms, change rooms, and a smoothly paved walking trail that winds along the shore of Killarney Lake and down to the water. Numerous summer events take place each year here in the park, geared to both youngsters, and to those a little less youthful.

Continuing towards town, and looking right, is the expansive Ag Grounds (with their connected

campground), and also the entrance to the Heritage Home for the Arts, a vibrant arts centre with regular gallery exhibitions, music events, and a variety of ongoing creative workshops.

Driving along, you will cross the Water Avenue Bridge, with Killarney Lake opening up beside you on the left, and the bay and campsite boats shining on your right. The road then swings around to the east here, becoming Park Street, and if you hang a left on Broadway Avenue (keep an eye out for the beautifully manicured Centennial Park garden on your right at this signposted corner), you will be heading straight into the town's business centre.

Business District:

Driving north up Broadway, you will spot a number of beautiful heritage houses (designated with lawn signs), and then the Play Park on your right. Nearby is the Co-op gas bar and convenience store, a Subway, plus the big Co-op food store.

Centennial Park



Business District



Broadway Avenue's popular play park.

Entering Killarney's town centre, you will find restaurants, the post office, a bakery, florist and gifts, hardware stores, banks, hair salons, insurance providers, custom framing, refillery, and a law office.

There's also a government liquor store, travel agency, a phone and computer provider, major car dealership – and more.

Across Broadway from the Erin Inn Motor Hotel (which includes a bar, and beer vendor), is the Killarney Place mall, featuring a pub restaurant (with adjoining public restrooms), a quality shoe and workwear store, a top fashion boutique, kitchenware and gift outlet, a large pharmacy, toy store, plus a huge furniture showroom, and more.

Situated at the corner of Broadway and South Railway is a spin cycle studio, and across the street is a special memorial park, named for the late Keith Heming, founder of the Killarney Foundation. A few blocks past the tracks, and on your left, is the Shamrock Centre, and its next-door neighbour the Wilderness Inn Motel (complete with authentic stuffed bears and alert deer occupying the lobby).

You can bowl in the rec centre, curl, skate, play hockey, enroll in dance and fitness classes, work out in the gym – and also use the spacious washroom facilities here to freshen up after your trip. The Shamrock Centre is also a prime location for a number of major sports, economic, and business events scheduled throughout the year.

Going back to South Railway Avenue, and turning left (east) brings you to the municipality's recently completed million-dollar fire hall, with its five bays, plus room for the fire fighters to both train and clean up after callouts.

Across the road is the Mary Ann Moore Wellness Centre, which offers a long list of esthetician services, therapeutic and relaxation massage, tanning, and a cocoon recovery pod.

Just south of the wellness centre is Shamrock Billiards, New Horizons Seniors' Centre, and across the street is the Royal Canadian Legion, featuring food, drinks, darts, and a large hall for musical entertainment and more.

And that's only a taste of what the town has to offer. Read on to find out more about everything Killarney.

Enjoy your stay – and we hope you come back for more.

Westside Community Gardens



2025 Calendar of Events



'Killarney Cruise Night' car shows will be rolling through town June 12, July 10 and August 14.

MAY 3

Rippin' And Roarin' Bull Riding

JUNE 7

Town Wide Yard Sale

JUNE 27-28

Fair Days

JULY 1

Canada Day Celebrations

JULY- AUGUST

Farmers Market

(every Saturday morning)

JULY 5

**Jade Eagleson - Kick off
to Summer Concert**

JULY 12-13

Prairie Pioneer Days

JULY 25-26-27

Filipino Festival

AUGUST 22-23-24

Sidewalk Sale Days

AUGUST 22-23-24

Killarney Lakeside Festival

NOVEMBER 8

Stuffed Stocking Artisan Market

NOVEMBER 29

Eli Barsi Band: Canadian Tribute

DECEMBER 5-6

Christmas in Killarney

STAY CONNECTED

Download our app and register with us to stay up to date with all the latest local news, upcoming events, emergency alert messaging, and weather for the Municipality of Killarney-Turtle Mountain. Available for the iPhone and Android phones.

Visit

www.killarney.ca

for more information or to get your app.

email: info@killarney.ca • 204-523-7247

Killarney ~ There's No Better Place!



Parks and Beaches



Erin Park's soft sandy beach provides hours of fun.

Killarney Lake

During the lazy days of summer, Killarney Lake is the hub of outdoor activity. From swimmers to water skiers, canoeists to fishing enthusiasts, everyone can find space to call their own. A boat launch and marina are situated on the quiet bay just outside Erin Park.

Inside the park is a buoyed swimming area, a dock to swim out to, sandy beach, washrooms and change rooms, and a splash park, all helping to provide the perfect blend of summer recreation.





It'll be party time at the beach this summer, with plenty of well groomed sand and several volleyball courts.

Erin Park

A meandering paved path leads strollers along an unspoiled shoreline, through a mature grove of elms and oaks, and past the Blarney Stone. Over the rise, beside a shaded picnic area and horseshoe pitch, is the sunny expanse of a fine sand beach. Park visitors enjoy the convenience of picnic shelters, washrooms, showers and change houses, plus beach volleyball courts.

A motel, campgrounds and restaurant are all located within one block of Erin Park.



Erin Park Splash Park

The Splash Park is guaranteed to entertain and keep you cool on those hot sunny days. Located conveniently beside Killarney Beach.



Explore the Trails



Killarney Ag Campground and bayside trail by night.

Walking Trail

Feel like a peaceful walk by the bay? Killarney's walking trail is just what the doctor ordered. The path begins by the Agricultural Campground, and meanders along the shoreline, past barns and the antique farm machinery at Heritage Village. The well-lit path allows for night-time strolling as well. Whether you enjoy it on foot or riding a bicycle, the trail around the bay is the perfect way to relax and enjoy some beautiful scenery.



Cross-Country Skiing

CONTACT US: Opportunities await you throughout the Killarney area. Call the Shamrock Centre at 204-523-8920 for maps and information.



Nature Trail

When you're in the mood for walking, check out the nature trail south of the Erin Park parking lot and across Highway 3. With the trickling Whitemud Creek, and walking paths along the small marsh areas, the trail is the perfect spot for bird watchers and nature sightseers.

Recreation



Karate class on the beach.

Sports, recreation and leisure activities for all ages are offered in Killarney, and form a valued part of our lives in the community.

People of all ages and abilities can find a way to compete, stay active, or enjoy the camaraderie of a team at the many facilities in Killarney.

The Shamrock Centre is a major recreation hub within the municipality. It includes a large artificial ice arena and curling rink, large capacity hall, six-lane bowling alley, large fitness centre, and meeting room space.

Other recreation/sport facilities within Killarney include tennis courts, soccer fields, baseball diamonds, campgrounds, miniature golf, numerous playgrounds, the fairgrounds, and a harness racing track. There's also the focus for many of our recreational pursuits – Killarney Lake.

For athletes with a competitive edge, or those just looking for some recreational fun, there are many opportunities to join a team, a league, or take on an individual challenge.

The recreation department works closely with figure skating, hockey, minor and senior baseball,

martial arts, boxing, pickleball, volleyball, dance, and a variety of other activities and sports within the community.

Killarney Lakeside Golf Club is well known for its lush greens and scenic fairways. This 'hidden jewel of the south' is an 18-hole course, offering a full service clubhouse with restaurant, pro shop, driving range, and golf facilities.

Winding its way through stately oaks, and along the shores of Killarney Lake, this is a refreshing and popular place to work on your swing and enjoy a great game of golf.

Killarney is no exception to the growing trend of making health and fitness a top priority.

Personal fitness facilities are available in the Shamrock Centre, while local groups provide instruction in spin cycling, weight training, yoga, aerobics, pilates, badminton, HIIT and barre classes, archery, and rifle training.

Whether you're looking for a chance to score some points, shoot some pool, or join a card game, the list of sports and leisure activities available in Killarney is endless.



Shamrock Centre

Killarney's recreation destination is the Shamrock Centre. This state-of-the-art sports facility has already attracted several big events, including the Scotties Tournament of Hearts in January 2010, and again in January 2018.

The main floor hosts the curling and hockey arena, banquet hall, dressing rooms, concession, washrooms, bowling alley, change rooms and offices. The second floor hosts a sound room, fitness area, change rooms, elevated viewing areas and press box, walking track, washrooms, meeting rooms, and a licensed lounge.

The facility also features seating for 750 in the hockey arena and 220 in the curling rink, as well as a handicap-accessible elevator lift.

Be sure to check out Killarney's Shamrock Centre.
It will bowl you over!



From bull riding to skating, the Shamrock Centre has it all.



The Recreation Destination of Southwest Manitoba

- Skating Arena • Curling Rink • Bowling Alley • Community Banquet Hall
- Fitness Centre with Walking Track • Concession • Licenced Lounge
- Meeting Rooms • Offices • Handicap Accessible Elevator Lift

Liana Smith - General Manager

Mandy Alexander - Recreation Director

Ph. 204-523-8920 | Fax 204-523-8349 | Email: gm@shamrockcentre.ca

P.O. Box 820 Killarney, MB R0K 1G0

www.killarneyrecreation.ca

www.killarney.ca

Golf



Killarney Lakeside Golf Club

The beautiful waters of Killarney Lake lap against the shores beside the Killarney Lakeside Golf Course. This 18-hole course boasts lush green fairways, and both traditional and links style design. Complete with beautiful scenery, rolling and level fairways, and some interesting water holes, you'll be captivated and challenged at the same time. Killarney Lakeside Golf Club also offers a licensed restaurant, outdoor patio, a practice green and range, rental equipment, and top quality golf merchandise. Located conveniently on the outskirts of town, with a peaceful lake view, golfing can truly be a relaxing, yet formidable sporting experience.

Pleasant Valley Golf Club

Just a 20-minute drive northeast of Killarney, the Pleasant Valley Golf Club is another must-see on your golf tour. Just head north on Hwy. 18, turn east on 253, and follow the signs. This family-owned and operated 18-hole Championship golf course offers elevations rising up 125 feet, and large undulating greens. Tree lined fairways and a meandering creek make your game fun for all skill levels. An outdoor patio offers a scenic view after a round of golf. *"Nothing Quite Like It!"*



The Hidden Jewel of the South

- Experience the Hidden Jewel of the South, an 18 hole (par 71) course, rated one of Manitoba's top ten courses to play.
- Originally established in 1923, this course has built a reputation for lush green fairways, undulating greens, and a challenging layout for all skill levels.
- Licensed restaurant / Beautiful patio
- Full driving range
- Rentals

Catering to corporate, private, weddings and staff functions. Come play with us.

Located 3 kilometres west of Killarney on South Railway Street

Tee Times: 204-523-8277
www.killarneylakeside.com

Nothing quite like it!

Nestled in the scenic Pembina Valley at the south end of Pelican Lake, this 18-hole course offers a challenge for all.

- Large greens cut into hillsides
- 9 hole putting green
- 40 golf cart rentals
- Licensed clubhouse & restaurant
- Wheelchair accessible

Check us out on Facebook

Corporate & Group Bookings welcome

204-537-2487
www.pleasantvalleygolfclub.ca

Activities and Attractions



From chariot to chuckwagon racing, there's plenty of horsing around at Killarney Fair.

Killarney Fair

Killarney Fair runs at the Ag Grounds on June 27, 28 and 29. Action starts Friday evening with the chuckwagon and chariot races, along with a supper, beer garden, and music under the tent.

Saturday starts with a pancake breakfast, followed by the parade, which makes its way down Broadway Avenue, bringing with it a variety of floats and plenty of candy for the kids.

There's a second go-round with more races on

Saturday, plus a third racing day on Sunday, along with homecraft displays, a cattle show, and the light and heavy horse competitions.

These favourites, along with popular events like the petting zoo, pig scramble, mutton bustin', watermelon eating, Killarney Idol, and more, are joined with new twists each year.

There's also plenty of food and stage entertainment running throughout the weekend, and lots of children's activities.



Friday & Saturday, June 27-28-29, 2025

Killarney Agricultural Grounds

**3 days of
Chuckwagon
Races**

- Horse & Cattle Shows • Children's Entertainment • Parade
- Stage Entertainment • Beer Gardens • Pancake Breakfast

Lots of games and activities for the kids!

For up-to-date information visit www.killarneyagriculturalsociety.ca



STAY FOR A DAY, A WEEK OR A MONTH

KILLARNEY AGRICULTURAL SOCIETY CAMPGROUND

RESERVATIONS ACCEPTED
204-523-4699

Entrance on Water Street from No. 3 Highway, from No. 18 Highway via Park Street to Water Street.



Scenic campground on Killarney Lake providing 115 sites, most with sewer and 30 amp service. Open 24 hours per day. Bathrooms and shower facilities available. Dump station on site. Daily, weekly and monthly rates. Manager on site from May 1 to September 30.

Seasonal sites available

www.killarneyagriculturalsociety.ca

Email: killarneyag@live.ca

www.killarney.ca

Activities • Attractions 13



The Kick off to Summer Concert, this year with Jade Eagleson, features fab fireworks, just like Canada Day!

Prairie Pioneer Days

Take a look at farming the old-fashioned way, and see how it changed over the past century. Hosted by the Turtle Mountain Flywheel Club on July 12 and 13, Prairie Pioneer Days attracts hundreds of people who come to enjoy threshing demonstrations, log sawing, machinery displays, plus a toy show, the working blacksmith shop, local fare, and entertainment. The pride of Pioneer Days is the Sunday afternoon parade (in front of the grandstand), where enthusiasts shine up their favourite antique farm implements for this grande finale. And don't miss a stop at the Heritage Village and the Stationary Engine Museum – all focused on our rural heritage and proud prairie history.

Fun at the Drive-In

When the sun starts to set, the fun doesn't have to stop. Pull up in front of the big screen, grab some popcorn, and catch a movie at the iconic Shamrock Drive-In. Located just south of Killarney on Highway 18, the Shamrock Drive-In is one of the last of its kind in the country, and has become a favourite tradition for visitors. Come experience the nostalgia of a real drive-in theatre.

49TH ANNUAL

Prairie Pioneer Days

July 12 & 13, 2025
KILLARNEY AGRICULTURAL GROUNDS

**2025
FEATURE:
CASE**



• Toy Show • Tractor Pull • Parade • Log Sawing
• Threshing Demos.....and much more!

POWER MACHINERY MUSEUM
Open July & August 10 a.m. to 5 p.m.
Rick 204-523-1881 • Stuard 204-523-8280

Follow us on Facebook

Experience a
bit of history

Open every
long weekend this
summer!



at the

Shamrock Drive In Movie Theatre

MAY LONG: Fri-Sun, May 16-17-18

JULY LONG: Fri-Sun, June 27-28-29

AUG LONG: Fri-Sun, August 1-2-3

SEPT LONG: Fri-Sun, August 29-30-31

For more information and upcoming
shows, follow us on

or call 204-523-1827



The Northern Pikes, one of several great KTMAC concerts to play the Killarney Legion.

Heritage Home for the Arts

Art exhibition pieces grace the walls of the beautifully finished interior of the town's century-old Farm Demonstration House, now the elegant Heritage Home for the Arts. A wide variety of concerts and arts and culture-related activities take place here throughout the year – some of them inside, and some outside on the house's beautiful, shady verandah, and on the Heritage Home grounds. And watch for the return of the three-day Killarney Lakeside Festival on the grounds from August 22-24. Many Killarney-Turtle Mountain Arts Council (KTMAC) concerts also take place at Killarney's Royal Canadian Legion. Visit www.killarneyarts.com for a full list of their upcoming concerts.

J.A.V. David Museum

The J.A.V. David Museum & Archives richly depicts the early settler days of Killarney-Turtle Mountain. The museum offers something for everyone – including a general store, military exhibits, the Charles Havelock Natural History display, a church exhibit, interiors of an early pioneer home, a doctor's office, the Edwards Studio Camera collection, plus a vast photographic collection from the area. The archives house both public and private manuscript materials. The museum, at 414 Williams Ave., Killarney, is open in July & August, as well as by appointment, from Tuesday to Saturday, 10 am – 5 pm (closed at noon).

Heritage Home for the Arts

Killarney's community arts & culture centre

- Art exhibitions
- Performing arts
- Workshops for all ages & experience
- Rentals for special events & meetings



**Open year round
Tuesday to Saturday, 1 p.m. to 4 p.m.**

For more information call 204-554-0023 or
email: ktmartscouncil@gmail.com
www.killarneyarts.com



**Killarney Turtle Mountain
arts
Council**



Located at 44 Water Avenue, Killarney

www.killarney.ca

Take a Step Back in Time

A walk through the museum will take you back in time to the general store, pioneer kitchen, war display, natural history room, and many other great collections.

Come in and view our new displays and enjoy a tour.

**J.A.V. David Museum is Open
July & August
Tuesday to Saturday 10-12 & 1-5**

Other times by appointment
(please call one of the numbers below)

Museum **204-523-7325**

Joyce **204-523-2482**
or **204-523-8889**

Email:

javidavidmuseum@outlook.com

Follow us on Facebook



J.A.V. David Museum

414 Williams Avenue, Killarney, MB

Farmers Market

The Killarney Farmers Market provides fresh produce and much more every Saturday morning throughout the summer, next to the Broadway Ave. play park.



Christmas in Killarney

Christmas in Killarney offers family fun and extended store hours, so you'll be sure to get a good start on the Christmas season. Santa will make a special trip to take part in the annual evening parade on Friday, December 5.



Snowmobiling

Killarney is a great snowmobiling destination that connects you to 500 km of well-groomed trails.

With signs to guide the way, snowmobilers can travel through the Killarney area, and throughout southwestern Manitoba, all on one linked-up trail.



St. Pat's weekend is always special, with a big party on the Saturday and a curling bonspiel all weekend.

Artist and sculptor Don Engbrecht (right) created a special installation for the Keith's Korner memorial park, at the corner of South Railway and Broadway. Below, Engbrecht's dragonfly sculpture downtown.



Dragonfly sculpture



Accommodations, Dining and more



Ag Campground on the bay.

Agricultural Society Campground

The Killarney Agricultural Society Campground is ideally placed for those participating in summer festival events and beach activities. Located across the street from Erin Park on the quiet bay, you can dock your boat by a campsite with optional cable hookup. The campground also features bathrooms, showers, a dump station, a boat launch, and 115 sites, most with sewer and 30 amp service.

Kerry Park Campground

Heading out west on South Railway Street, you will find Kerry Park Campground, operated by the Killarney Kinsmen. Kerry Park boasts 225 sites, tennis courts, a large playground area for children, a sandy beach, and a boat launch on Killarney Lake that's away from the center of activity. It's also located just down the road from the Killarney Lakeside Golf Club. Daily, weekly and monthly rentals are available.

Kerry Park's playground



The Emerald RV Resort, just across the street from Killarney Beach and Splash Park.

Emerald Suites Motel and RV Resort

Located behind the Emerald Suites Motel, the RV resort is conveniently located across the street from Killarney Beach. The campground features 75 serviced lots with washrooms, showers, and firewood.

Erin Inn Motor Hotel



- Cold beer vendor
- Pub with pool tables & 8 VLTs
- 14 newly renovated rooms with AC & free Wi-Fi

STAY



PLAY



543 BROADWAY AVE., KILLARNEY, MB

204-523-4651

erininnhotel@gmail.com



www.canadianwildernessinn.com

Stay with us!

- 29 spacious guestrooms
- Wireless internet
- 2 locations to serve you



Killarney!

204-523-4111

220 Geates Street West
South of the Shamrock Centre
killarney@canadianwildernessinn.com

Boissevain!

204-534-7155

Located on Hwy #10 South
306 Mountain Street
boissevain@canadianwildernessinn.com

Emerald Suites MOTEL & RV RESORT

- In-room Fridge, Microwave, Coffee Maker
- Air Conditioned
- High Speed Wireless
- Cable T.V.
- Propane BBQs & Picnic Tables for guests
- Restaurant & Miniature Golf adjacent
- **1 Bedroom Light Housekeeping Suites**
- **All rooms completely renovated**
- 75 Serviced RV/Campground Sites ~ Seasonal & Daily



Located across the street from the beach on beautiful Killarney Lake and the ERIN PARK SPLASH PARK!

We look forward to meeting you.

Owned & Operated by Southwest Resorts Inc.
RICHARD A. KAUTZ, President, CEO & Gopher
103 Water Avenue • P.O. Box 1600, Killarney, MB R0K 1G0

PH: 204-523-4215

www.emeraldisle.ca

www.killarney.ca



Coffee & Tea
Lunch & Baked Treats
Wine & Beer
508 Broadway Avenue



Legion

Branch #25

112 Finlay Street • 204-523-4950

MON & WED OPEN 12 - 10 P.M.

TUES & THURS OPEN 12 - 6 P.M.

FRI & SAT OPEN 12 - 8 P.M.

(Times are subject to change. Check our Facebook page for updated information.)



Mon & Wed Dart League 6:30 - 10 p.m.

Thursdays: Bingo 5:45 p.m.

Fridays: Chase the Ace 5-6 p.m.

Saturdays: Meat Draw 5-6 p.m.

Café 25 serving Pizza & Pub Appies

Outdoor Patio • Hall Rentals

COME JOIN THE FUN!

NO MEMBERSHIP REQUIRED.

Wu's Restaurant

204-523-8989

Dine In or Take
Out

523 Broadway Avenue,
Killarney

**OPEN 7 DAYS
A WEEK**

TUE-SAT 9 a.m.-8 p.m. • M & SUN. 11:30 a.m.-8 p.m.



THE BEACH HUT
RESTAURANT
& MINIATURE GOLF

- Wraps
 - Salads
 - Chili
 - Hot Dogs
 - Fries
 - Ice Cream
 - Shakes
 - Sundaes
 - Flatbread Pizzas
 - Muffins
- baked in house

Water Street off Hwy. #3
Killarney, MB

204-523-8880

Email: beachhut@live.com



**BEST
BURGERS
IN TOWN!**

EAT IN OR TAKE OUT
(DELIVERY AVAILABLE)

OPEN 7 DAYS A WEEK

www.killarney.ca

SUBWAY
eat fresh.®

Breakfast sandwich/wrap
Sandwich • Salad • Wrap
Rice Bowl • Soup



322 Broadway Ave., Killarney
204-523-8520

MON-SAT 7 a.m.-10 p.m.

SUNDAY 8 a.m.-10 p.m.

Open early for a healthy breakfast

Health Care



Garden courtyard at Bayside Personal Care Home.

Nothing is more important than the health and wellness of those visiting Killarney, and those who call the community home. Providing the best health care in a comfortable rural setting is one of the community's top priorities.

Highly qualified medical staff, including doctors, nurses and technicians, create a team that provides professional treatment and services to Killarney-Turtle Mountain and the surrounding area.

Killarney is a regional centre for the delivery of health and community services.

The Tri-Lake Health Centre, a modern facility with attached personal care wings, provides the best in medical care. Acute care, along with 24-hour urgent care services, is available at the local hospital, along with palliative care and a host of other important services including a lab facility, ultrasound unit, and a state-of-the-art xray unit. A team of doctors takes appointments at the adjoining medical clinic.

This is also the site for MB Telehealth, which links patients from southwest Manitoba to specialists across the province via live video and audio.

A long list of other health professionals provides a variety of medical services to the community. Dentists, optometrists, registered massage therapists, and a chiropractor serve the needs of patients from Killarney and the surrounding area.

The skills of pharmacists, physiotherapists, and dieticians are also readily available. The public health unit oversees community care from prenatal classes to care for the elderly.

Medical/Nursing

The Acute Care hospital has 22 beds, three observation beds, urgent care, and two treatment rooms. A new emergency room area was created in 2024.

Bayside Personal Care Home next door has 60 beds, and a beautiful interior courtyard for residents.

These two areas provide opportunities for physicians, registered nurses, licensed practical nurses, and health care aides.



Killarney Medical Clinic and Tri Lake Health Centre (TLHC)

86 Ellis Drive
Clinic 204-523-4609
TLHC 204-523-4661

The health centre serves an area of approximately 5,800 people. From May long weekend to September long weekend, approximately 200 cottages by Killarney Lake and 1,000 cottages surrounding Pelican Lake are occupied. As well, numerous campgrounds in the area are filled to capacity with hundreds of visitors. During the summer months the population of Killarney-Turtle Mountain Municipality doubles in number.



Killarney Airport is used for emergency transfers by STARS helicopters and other medevac aircraft, like this Twin Otter. Patients can be transported quickly to centres such as Winnipeg.

Emergency Services

Safety is a priority in Killarney as well. The RCMP staff a detachment in the community, and police, along with ambulance, fire, and rescue, provide excellent emergency services to the community and surrounding region. STARS air ambulance and LifeFlight services are also available out of the local airport, just minutes south of Killarney.



Grand opening of the new fire hall in 2021.



The Killarney Turtle Mountain Fire Hall, completed in 2020.

Tri-Lake Health Centre's ultrasound suite.



Killarney Pharmacy

Caring for our Community.

Prescriptions • Health & Beauty Aids

204-523-4273

In Killarney Place mall
530 Williams Avenue



RxPharmaChoice *Advice for Life*

Education & Childcare



Killarney School's running club.

Turtle Mountain School Division

435 Williams Avenue • 204-523-7531

Killarney School

417 King Avenue • 204-523-4696

Operated by Turtle Mountain School Division, the school offers education for kindergarten to Grade 12, plus the Killarney Nursery School. The school has a speech language therapist, a division psychologist, a counsellor, plus class video-conferencing between division high schools.

Lakeside Christian School

237 Hammond St. • 204-523-8240

The Lakeside Christian School has been at its present location since 1999. It is funded independently, and offers kindergarten to Grade 12.



Killarney School toots their horn with an excellent band program.



Lakeside Christian School (above) and Killarney School (below) take the stage with their musicals.



Over 26,000 items to borrow
Free Wi-Fi • Free computer access
Large used book sale

Tuesday to Friday 9 a.m.-5 p.m.
Saturday 9 a.m.-4 p.m.

204-523-4949

318 Williams Ave.
www.lakelandregionallibrary.ca



Turtle Mountain Adult Education

510 Finlay Street • 204-523-4492

The adult education centre has been in operation since 1998, providing quality education for mature students earning their high school diplomas. The centre also provides assistance in connecting to post secondary education.

Kiddie Corner Early Learning Centre

711 Mountain Avenue • 204-523-8940

Licensed child care for ages 12 weeks to 5 years in our early learning centre. Licensed school-age care for ages 6 to 12 years is available in their program located at Killarney School.

Roots of Early Learning Centre

305 Broadway Avenue • 204-554-8687

Trained staff, with four infant spaces and 16 preschooler spaces available. Casual, full-time and part-time. Hours: 6:30 a.m. to 5:45 p.m.

Places of Worship

Killarney is a community with a strong sense of spirituality and faith. The church plays an important role for many people who live in Killarney, or spend time visiting the area.

With churches serving a variety of denominations, most people are able to fill their spiritual needs locally. The thriving church community can be seen in the many expanding and renovated houses of worship built in the last several years.

From worship services to special programs for youth, men, women, and seniors, the churches offer a variety of avenues to get involved and make a connection with others.



Shamrock Billiards welcomes players of all ages. Right next door is the vibrant New Horizons Seniors' Centre.

Lakeland Regional Library

Ample, up-to-date book and periodical collection, free access to wifi and public

computers, DVDs, CD audio books, and access to Libby (ebooks and digital audio books).

Free children's programs, and a huge used book sale in the basement. Turn to page 22 for location and more information.



Bindi the burrowing owl visits the Lakeland Regional Library.



Calvary Baptist Church - 312 Mountain Ave.

Free Methodist Church - 333 Hossack Ave.

Holy Trinity Anglican Church - 204 Fletcher St.

Kingdom Hall of Jehovah's Witnesses - Hwy. 3

Killarney Mennonite Church - 66 Bay Ave.

Killarney United Church - 432 Williams Ave.

Lakeview Community Church - 616 Lakeview Ave.

New Life Assembly - 411 Finlay St.

Retirement or Relocation



Heading home after school down leafy streets.

Killarney is the perfect place to retire or relocate.

We are a community ready to welcome newcomers – the door is wide open!

With rapidly improving technology, it is easy to do business globally while choosing a home base locally. The world is at your fingertips, while you can enjoy small town life and all the benefits it brings. An affordable cost of living, in a safe and growing community, top the list of things attracting new people to Killarney.

There is also a growing demand for professionals in a number of fields, including health care, and a constant need for skilled trades workers and ag

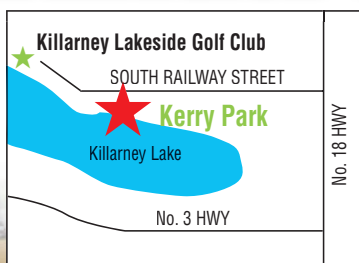
workers, plus staff for a variety of local businesses and services.

Maybe you're looking for a community where you can relax and enjoy the retirement phase of life.

Affordable housing in a scenic community makes Killarney a popular place for retirees.

Access to excellent medical care, and a long list of leisure activities and programs aimed to keep seniors busy and active, along with all the shopping and services you need right down the street, make it an easy choice to relocate to Killarney.

KERRY PARK



Full service site:

\$40/day

\$240/week

\$800/month

\$2,000/seasonal

- 225 Sites
- Tennis Courts
- Children's Playground
- Beach Volleyball
- Washrooms/Shower
- Boat Launch
- Firewood
- Drive-thru Sites
- Close to Golf Course
- Weekly & Monthly Rentals



OPERATED BY THE
KILLARNEY KINSMEN



For more information contact managers Ron & Cheryl Burke 204-523-6000 or visit kerrypark.ca

Shopping & Services



Killarney's popular annual Sidewalk Sale.

A thriving business centre, Killarney is the hub for a variety of shopping and services for a large trade area in the southwest corner of Manitoba.

If you're just in Killarney for a visit, or call the community home, you can find everything you need – and more – right here. Whether you're looking for the perfect keepsake from Killarney, local foods, or the ingredients for a lakeside barbecue, you'll find it in town.

The business district boasts a major car dealership, vehicle and tire repair, florist and gift shops, investment and real estate offices, several financial institutions, bakeries, furniture, a shoe store and clothing stores, hairdressers, a post office,

a meat market and abattoir, computer sales and service, custom framing, a refillery, plus grocery and hardware stores, and a large commercial greenhouse and garden centre – just a small sampling of the retail outlets that can be found in Killarney's downtown.

Courteous service, ample parking, and easy access all contribute to the growth of the thriving retail sector. And the town and surrounding area also offer many specialized services, including building centres and commercial printing.

Hotels, restaurants and convenience stores serve both the local residents of the community, and Killarney's many visitors. With more than 175 businesses and services ready to serve you, Killarney can meet your every need.

But there's always room for more. Killarney is ready for industrial expansion, and the door is always open for someone looking to establish a business to serve a niche market.

With rapidly advancing technology, you can do business around the world, while enjoying the benefits of living in a quiet, safe and affordable community.

In Killarney the global economy is at your fingertips, while the beach and golf course are in your backyard.

BUTCHER SHOP

Open Monday to Friday 8:30 a.m. - 5 p.m.
Wednesday 9 a.m. - 4:30 p.m.



- Fresh steaks cut to order
- Meat packs
- Meal Starter packages (already cooked)
- In-store made sauces
- And much more!

Book your cows, pigs and lambs for butchering and custom cutting



KILLARNEY MEATS

204-523-4308

604 South Railway St. West, Killarney
killarneymeats.ca

KILLARNEY'S

TOY STORE!



Large selection of

- Lego • Nerf • Barbie
- Crafts • Puzzles • Games
- & more!

MON-FRI 9-5:30 • SAT 9-5



Trinkets & Treasures

Killarney Place Mall • 204-523-4572



Kitchen & Caboodle

Kitchen, Decor and More

- ☀ Home decor
- ☀ Ladies' accessories
- ☀ Wall art ☀ Kitchenwares
- ☀ Women, men and baby gifts
- ☀ Personal care items
- ☀ Memorial gifts
- ☀ Silk and dried flowers

and more...

**OPEN
MAY 1st**



Located in the Killarney Place Mall

204-554-2000

MARVAL AUTO BODY

*Complete Auto
Body Service*



DAVID KINLEY

434 North Railway St.
Killarney

Ph: 204-523-4974
Fax: 204-523-7598

Whatever the occasion, our flowers will make it special!



Flower Shop & Gifts

204-523-7388

*Mon - Fri 9:30am to 5:30pm
Sat and Sun - Closed*

*24/7 online orders:
www.sweetpeaandwillow.ca*



516 Broadway Avenue, Killarney

**Lewis
& Jones**

Service, Protection
& Peace of Mind



Desjardins
Financial Security
Investments Inc.



**INSURANCE - REAL ESTATE
AUTOPAC - INVESTMENTS
FINANCIAL PLANNING
LIFE INSURANCE**

**532 BROADWAY AVE. PO BOX 1000
KILLARNEY, MB R0K 1G0
P: (204) 523-4922 T/F: 1-866-355-8292
WWW.LEWISANDJONESGROUP.COM**

Mutual funds are distributed through Desjardins Financial Security Investments Inc. Life and health insurance products are provided by Lewis and Jones Group Ltd. Real Estate is not done through or affiliated with Desjardins Financial Security Investments Inc. Desjardins and related trademarks are trademarks of the Fédération des caisses Desjardins du Québec used under license

**Lewis
& Jones**

Service, Protection
& Peace of Mind

Real Estate Group

532 Broadway Ave. Killarney MB R0K 1G0

Ph: 204-523-4922 Fax: 204-523-7117

www.lewisandjonesgroup.com

www.marleesellsrealestate.ca

email: ljgroup@ljgroup.ca

YOUR LOCAL REALTORS

Curtis Dickson
cell: 204-523-6321

Marlee Cline
cell: 204-523-1831





Home hardware

8:30 A.M.-5:30 P.M. MON.-SAT.

204-523-4635

509 Broadway Avenue
Killarney

www.homehardware.ca

ATM AVAILABLE

Visit us at 110 Finlay Street.



Westoba
A division of Assiniboine Credit Union

Assiniboine
Credit Union



Sales and Leasing



Parts and Service



Chapman's
Killarney, MB

*Your Satisfaction
is our Future*

1-204-523-4674

Toll Free 1-888-309-8162

www.chapmanmotorsgm.ca

THE

Carpet

WAREHOUSE LTD.



- Carpet
- Vinyl Flooring
- Luxury Vinyl
- Ceramic Tile
- Hardwood Floors
- Dulux Paint
- Hunter Douglas
Window Coverings

204-523-5667 | 1-800-325-8066

**442 North Railway St.
Killarney, MB**



www.the-carpetwarehouse.ca



carpet442@hotmail.ca



www.killarney.ca

Big city style in a great small town



Gwen's Trends

LADIES & MENS WEAR

In Killarney Place mall

530 Williams Avenue, Killarney, MB

PH. 204-523-8162

Email: trends@mts.net

Vervain

Greenhouse
& Garden Center

Come visit us
during our Spring, Fall
& Holiday Seasons!



Follow us on



204-523-4890

337 Norquay Ave. Killarney, MB.
www.vervaingreenhouse.com

TY GWYN GALLERY AND FRAMING

Fine Art & Gifts
Refillery
Custom Framing & Signs

508 Broadway Avenue

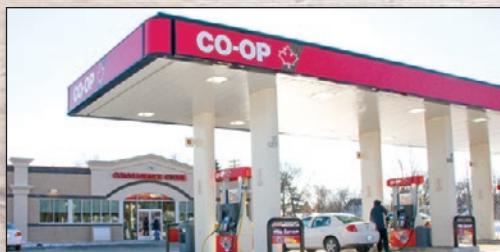
The best selection of footwear
in southern Manitoba



SHOES & M'ORR

204-523-7248

VISIT US IN THE KILLARNEY PLACE MALL
www.shoesandmorr.ca



KILLARNEY GAS BAR

320 BROADWAY AVENUE | 204-523-5051
MON-SAT 7:00 a.m. - 10:00 p.m. | SUN 8:00 a.m. - 10:00 p.m.



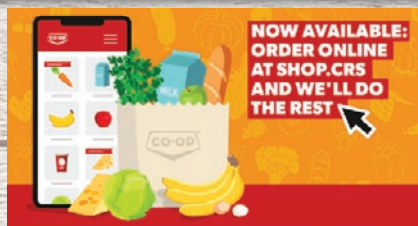
CARDLOCK/BULK PETROLEUM

15 NEELIN STREET | 204-523-6124
24 HOURS, 7 DAYS A WEEK



KILLARNEY FOOD STORE

330 BROADWAY AVENUE | 204-523-4653
MON-FRI 9:00 a.m. - 8:00 p.m.
SAT 9:00 a.m. - 6:00 p.m. | SUN Noon - 6:00 p.m.



Boundary

boundaryco-op.crs

Killarney Professional Building • 405 Broadway Avenue

K I L L A R N E Y
DENTAL



Dr. Danielle Mansfield, DMD • Dr. Brett Embers, DMD

www.turtlemountaindentalgroup.ca

204-523-4601

email@killarneydental.com



KILLARNEY OPTOMETRIC CENTRE
Life is worth seeing!



204-523-4613

Dr. D. McGill O.D.

• Dr. C. DeCock O.D., M.S., F.A.A.O.

killarneyvision.com



kvseyes@gmail.com

www.killarney.ca

Shopping • Services **29**



CENTURY 21.

Westman Realty Ltd.



Deb Robins
204-523-2334



Wally Cobbledick
431-266-2100

Residential
Lakeshore
Commercial
Acreages • Farms

www.debrobins.com
www.wallycobbledick.com

Visit us in Killarney Place mall • 204-523-7088

Killarney Laundromat

9 Washers including 1 Oversize Washer
for Sleeping Bags & 10 Dryers
All machines cleaned & checked daily

Located 1-1/2 blocks east of Post Office on
Finlay in beautiful downtown Killarney, MB

OWNER/MANAGER JOHN EVANS

Summer hours: April 1-October 31 - 7:30 AM - 10 PM

Winter hours: November 2-March 31 - 9 AM - 9 PM



**For all your
equipment
rental needs**

We are a Hutterite rental centre located southwest
of Killarney, MB offering a large variety of tools and
equipment for contractors or home owners.



- Hand-held / Power Tools
 - Scaffolding
 - Janitorial
 - Landscaping & Yard Maintenance
 - Concrete Equipment
 - Shop Tools
 - Trailers
 - Lighting Equipment
 - Building Tools
 - and a whole lot more!
- 100s OF TOOLS & PARTS*

EQUIPMENT SALES AVAILABLE – AUTHORIZED DEALER



MAYFAIR COLONY FARMS LTD.

Box 1360, Killarney, MB R0K 1G0

204-523-6628

email: wayfairrentals@gmail.com

www.wayfairrentals.ca



GOODYEAR
Get there™

Killarney Tire Service

SEE US FOR ALL YOUR AUTOMOTIVE NEEDS.

We're more than just tires.

• Windshields • Safeties • Brakes • Alignments

• Qualified Auto Mechanics on staff



204-523-7591

509 Fletcher
Street East
Killarney, MB



Agriculture



Inland grain terminals load up railway cars.

The Municipality of Killarney-Turtle Mountain and surrounding area are deeply rooted in agriculture. This industry, which serves as both an economic and cultural cornerstone, has stood the test of many changes and challenges for more than a century. Both the town and the surrounding rural area continue to prosper and grow as an agribusiness centre.

Flowering, fragrant canola borders corn, wheat, barley and oats in farmers' fields. Numerous specialty crops, including soybeans, millet, and sunflowers, are also grown.

Producers from a large trading area come to Killarney for the inputs they need to grow a strong and healthy crop, to upgrade or service their equipment, and to market their commodities.

Known as the wheat capital of Manitoba, Killarney features three inland grain terminals and two state-of-the-art feed mills. Implement dealerships representing major manufacturers are located in Killarney, in addition to machine and welding shops and modern service centres.

There is a vibrant auction mart, a veterinary clinic, and a busy abattoir to accommodate the needs of numerous livestock producers.

Agribusiness is an integral part of the local economy, which includes large seed and seed cleaning operations, and numerous hog barns.

The agricultural community is constantly working to keep up with changing technologies, tap into food production trends, and is strongly supported in their efforts to add value to their products.

Killarney has a plan to take advantage of any opportunity that finds a fit with the community.



Killarney's \$30 million HyLife feedmill was completed in the summer of 2018.



**CENTENNIAL
FARM SUPPLY LTD.**

- CardLock
- Propane
- Lubricants
- Napa brand Tools
- Welding Supplies
- Fuel Storage Tanks & Equipment

204-523-4938
437 Finlay Street E • Killarney

www.killarney.ca



**Visit us for all your
Sales, Parts and
Service needs!**

NEW HOLLAND

mazergroup.ca

*KCEC's Kickoff to
Summer with*

**JADE
EAGLESON**

JULY 5, 2025

50 WATER AVE

KILLARNEY, MB

**SPECIAL GUEST:
STEVEN LEE OLSEN**

EARLY BIRD PRICING

\$55

ADULTS

\$25

YOUTH

6-12 YRS

TICKETS AT [EVENTBRITE.COM](https://www.eventbrite.com) AND
SHAMROCK CENTRE