

# Killarney

M A N I T O B A

*There's no better place*

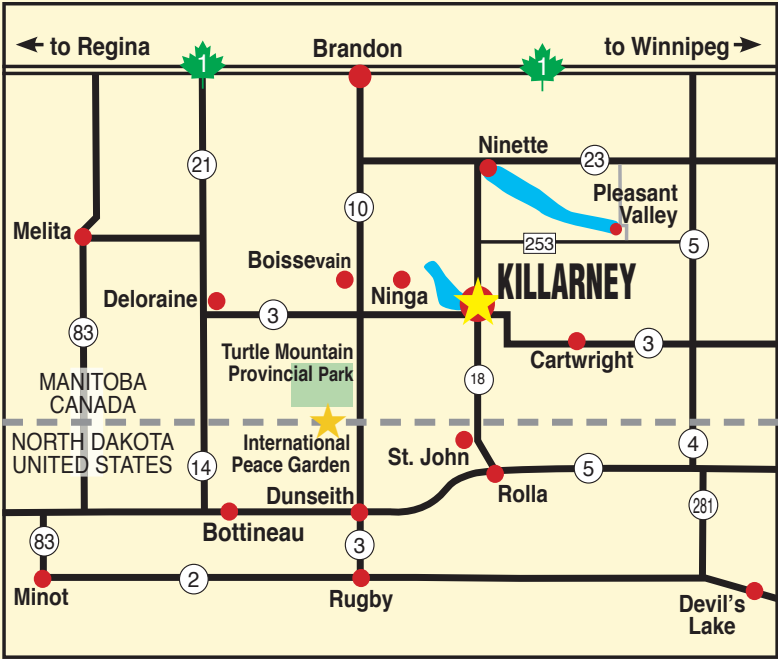


VISITOR & RELOCATION GUIDE 2023

# How to find us

**Killarney** is situated in southwest Manitoba on Highway 18, beside beautiful Killarney Lake and near the majestic International Peace Garden.

- Less than a 10 minute drive from the Canada-US border.
- Population of just 2,500 - with all the city comforts.



## Travel Manitoba Tourist Information:

Tourist information is available at the Heritage Village off Highway 3. Brochures are available at the Killarney Place mall kiosk.

## For more information about Killarney contact:

725 Broadway Avenue  
Box 820, Killarney, MB R0K 1G0  
Ph. 204-523-8920  
or visit [www.killarney.ca](http://www.killarney.ca)



Printed and published by  
THE KILLARNEY GUIDE  
[www.killarneyguide.ca](http://www.killarneyguide.ca)

## CONTENTS

Welcome	3
Town Tour	5
Events Calendar	7
Parks & Beaches	8
Trails	10
Recreation	11
Activities & Attractions	14
Accommodations	19
Dining	21
Health Care	22
Education & Childcare	24
Worship	25
Retirement or Relocation	26
Shopping & Services	27
Agriculture	35



# Killarney

## *The Emerald Isle Oasis*

Nestled along the shores of beautiful Killarney Lake, the prairie oasis of Killarney offers ample opportunity to relax and enjoy the amenities. Golf enthusiasts will find paradise in this popular resort town, well known for its traditional links style 18-hole golf course, complete with lush green fairways that border the lake. Winter recreation abounds with scenic snowmobile and cross-country ski trails and the Shamrock Centre recreation complex.



## Welcome to Killarney



**JANICE SMITH**  
Mayor

This is your invitation from Mayor and Council, to come visit the Municipality of Killarney-Turtle Mountain!

Upon your arrival to our beautiful town, you will be greeted by a friendly community surrounded by abundant farmland and situated around a scenic lake for your enjoyment.

You will find Killarney has many amenities that make us a vibrant destination and a desirable place to relocate.

The Shamrock Centre is the heart of our municipality, with an ice rink, curling club, bowling lanes and a fitness centre. It also serves as our community hall, with the capacity to host up to 600 people.

If you golf, we have the Jewel of the South. If you enjoy the outdoors we have walking trails, and we are adjacent to the beautiful hiking available in the Turtle Mountains. Killarney Heritage Home for the Arts and our museums will complement your visit.

The business sector will meet all your needs, with many retailers who work hard to keep Killarney prosperous.

If it is just for the day, or you are staying awhile, I am sure you will agree...There's no better place!

Welcome to Killarney-Turtle Mountain. Home of beautiful landscapes, one-of-a-kind events, and year-round activities. Killarney-Turtle Mountain has lots to offer. Whether you're looking for housing, recreation, or just a day away, you can be sure to find lots to do in this hidden gem. Killarney is an age-friendly community, with a great sense of community pride.



**DOYLE PIWNIUK**  
MLA

If you have any questions or need assistance, please contact our office at [info@doylepiwniuk.ca](mailto:info@doylepiwniuk.ca), or give us a call at 1-204- 552-0130.



# Shamrock Centre

THE RECREATION DESTINATION OF SOUTHWEST MANITOBA

- Skating Arena • Curling Rink • Bowling Alley • Community Banquet Hall
- Fitness Centre with Walking Track • Concession • Licenced Lounge
- Meeting Rooms • Offices • Handicap Accessible Elevator Lift



Liana Smith - General Manager

April Archambault - Recreation Director

Ph. 204-523-8920 • Fax 204-523-8349 • Email: gm@shamrockcentre.ca • P.O. Box 820 Killarney, MB R0K 1G0

[www.killarney.ca](http://www.killarney.ca)





# A quick tour through town

Killarney's Broadway Avenue.

## **Welcome to Killarney – a small town with a big heart.**

And a lot to do. The kids can enjoy the splash park, and you can take in some serious golf, launch a boat, swim at the beach, or set up in a number of leafy campsites. There's restaurants, a liquor store, a large food store, and pharmacy, and of course our extensive health centre – to name just a few of the town's many amenities.

Here's how to find some of them.

**From Highway 3:** You can pull north into Killarney from Hwy 3 onto Water Avenue. The town's historic water tower is visible just to the west at this turn.

As you travel up Water Avenue, you will see the Emerald Isle Motel on your left, and the popular, seasonal, retro-1950s Beach Hut diner (complete with mini-golf) on your right.

Right across the street is the leafy and forested Erin Park, with its sandy beach, splash park, BBQ pits (with firewood), washrooms, change rooms, and a smoothly paved walking trail that winds along the shore of Killarney Lake. Numerous summer events take place each year here in the park, geared to both youngsters, and to those a little less youthful.

Continuing towards town, and looking right, is the expansive Ag Grounds (with their connected

campground), and also the entrance to the newly restored and re-invented Heritage Home for the Arts, a vibrant arts centre with regular gallery exhibitions, music events, and a variety of ongoing creative workshops.

Driving along, you will cross the Water Avenue Bridge, with Killarney Lake opening up beside you on the left, and the bay and campsite boats shining on your right. The road then swings around to the east here, becoming Park Street, and if you hang a left on Broadway Avenue (keep an eye out for the beautifully manicured Centennial Park garden on your right at this signposted corner), you will be heading straight into the town's business centre.

### **Business District:**

Driving north up Broadway, you will spot a number of beautiful heritage houses (designated with lawn signs), and then the Play Park on your right, situated on the town's peaceful Green Space. This is also the location for the town's popular Farmers Market, held each summer on Saturday mornings. Nearby is the Co-op gas bar and convenience store, a Subway, plus the big Co-op food store.



Centennial Park.

# Business District



**Broadway Avenue's popular play park.**

Entering Killarney's town centre, you will find restaurants, the post office, a bakery, florist and gifts, hardware stores, banks, hair salons and a spa, insurance providers, and a law office.

There's also a government liquor store, travel agency, a phone and computer provider, major car dealership – and more.

Across Broadway from the Erin Inn Motor Hotel (which includes a restaurant, bar, and beer vendor), is the Killarney Place mall, featuring an Irish-flavoured pub restaurant and marketplace (with adjoining public restrooms), a quality shoe and workwear store, a top fashion outlet, large pharmacy, denturist services, giftware and florist, toy store, plus a huge furniture showroom, and more.

Situated at the corner of Broadway and South Railway is a spin cycle studio, and across the street is a special memorial park, named for the late Keith Heming, the founder of the Killarney Foundation. A few blocks past the tracks, and on your left, is the Shamrock Centre, and its next-door neighbour the Wilderness Inn Motel (complete with authentic stuffed bears and alert deer occupying the lobby).

You can bowl in the rec centre, curl, skate, play hockey, enroll in dance and fitness classes, work out in the gym – and also use the spacious washroom facilities here to freshen up after your trip. The Shamrock Centre is also a prime location for a number of major sports, economic, and business events scheduled throughout the year.

Going back to South Railway Avenue, and turning left (east) brings you to the municipality's recently completed million-dollar fire hall, with its five bays, plus room for the fire fighters to both train and clean up after callouts.

Across the road is the Mary Ann Moore Wellness Centre, which offers a long list of esthetician services, plus yoga, therapeutic massage, a salt pool, whirlpool and sauna, a floating cabin, plus dietitian and foot care services. Special weekend events also take place in these modern, beautiful new premises.

And that's only a taste of what the town has to offer.

Read on to find out more about everything Killarney.

Enjoy your stay – and we hope you come back for more.

## **Westside Community Gardens.**





# 2023 Calendar of Events



Cruizing to Killarney car shows will be rolling through town again in 2023.

**MARCH 17-19**

**St. Patrick's Day Celebrations**

**APRIL 14**

**Will's Jams**

**MAY 6**

**Rippin' And Roarin' Bull Riding**

**JUNE 3**

**Town Wide Yard Sale**

**JUNE 23-24**

**Summer Blast & Fair Days**

**JULY 1**

**Canada Day Celebration  
& Fireworks with The Reklaws**

**JULY 8-9**

**Prairie Pioneer Days**

**AUGUST 25-26**

**Sidewalk Sale Days**

**NOVEMBER 4**

**Stuffed Stocking**

**DECEMBER 1-2**

**Christmas in Killarney**

## STAY CONNECTED

Download our app and register with us to stay up to date with all the latest local news, upcoming events, emergency alert messaging, and weather for the Municipality of Killarney-Turtle Mountain. Available for the iPhone and Android phones.

**Visit**

**[www.killarney.ca](http://www.killarney.ca)**

for more information or to get your app.

email: [info@killarney.ca](mailto:info@killarney.ca) • 204-523-7247

*Killarney ~ There's No Better Place!*



# Parks and Beaches



Erin Park's soft sandy beach provides hours of fun.

## Killarney Lake

During the lazy days of summer, Killarney Lake is the hub of outdoor activity. From swimmers to water skiers, canoeists to fishing enthusiasts, everyone can find space to call their own. A boat launch and marina are situated on the quiet bay just outside Erin Park.

Inside the park is a buoyed swimming area, a dock to swim out to, sandy beach, washrooms and change rooms, and a new splash park, all helping to provide the perfect blend of summer recreation.







It'll be party time at the beach this summer, with plenty of well groomed sand and several volleyball courts.

## Erin Park

A meandering paved path leads strollers along an unspoiled shoreline, through a mature grove of elms and oaks, and past the Shamrock Fountain and the Blarney Stone. Over the rise, beside a shaded picnic area and horseshoe pitch, is the sunny expanse of a fine sand beach. Park visitors enjoy the convenience of picnic shelters, washrooms, showers and change houses, plus beach volleyball courts. A motel, campgrounds and restaurant are all located within one block of Erin Park.



## Erin Park Splash Park

The Splash Park is guaranteed to entertain and keep you cool on those hot sunny days. Located conveniently beside Killarney Beach.





# Explore the Trails

Killarney Ag Campground and bayside trail by night.

## Walking Trail

Feel like a peaceful walk by the bay? Killarney's walking trail is just what the doctor ordered. The path begins by the Agricultural Campground, and meanders along the shoreline, past barns and the antique farm machinery at Heritage Village. The well-lit path allows for night-time strolling as well. Whether you enjoy it on foot or riding a bicycle, the trail around the bay is the perfect way to relax and enjoy some beautiful scenery.



## Cross-Country Skiing

Opportunities await you throughout the Killarney area. Call the Shamrock Centre at 204-523-8920 for maps and information.

## Nature Trail

When you're in the mood for walking, check out the nature trail south of the beach parking lot and across Highway 3. With the trickling Whitemud Creek, and walking paths along the small marsh areas, the trail is the perfect spot for bird watchers and nature sightseers.





# Recreation



**Karate class on the beach.**

Sports, recreation and leisure activities for all ages are offered in Killarney, and form a valued part of our lives in the community.

People of all ages and abilities can find a way to compete, stay active, or enjoy the camaraderie of a team at the many facilities in Killarney.

The Shamrock Centre is a major recreation hub within the municipality. It includes a large artificial ice arena and curling rink, large capacity hall, six-lane bowling alley, large fitness centre, and meeting room space.

Other recreation/sport facilities within Killarney include tennis courts, soccer fields, baseball diamonds, campgrounds, miniature golf, numerous playgrounds, the fairgrounds, and a harness racing track. There's also the focus for many of our recreational pursuits – Killarney Lake.

For athletes with a competitive edge, or those just looking for some recreational fun, there are many opportunities to join a team, a league, or take on an individual challenge.

The recreation department works closely with figure skating, hockey, minor and senior baseball, martial

arts, boxing, aquatic programs, volleyball, dance, and a variety of other activities and sports within the community.

Killarney Lakeside Golf Club is well known for its lush greens and scenic fairways. This 'hidden jewel of the south' is an 18-hole course, offering a full service clubhouse with restaurant, pro shop, driving range, and group facilities.

Winding its way through stately oaks, and along the shores of Killarney Lake, this is a refreshing and popular place to work on your swing and enjoy a great game of golf.

Killarney is no exception to the growing trend of making health and fitness a top priority.

Personal fitness facilities are available in the Shamrock Centre, while local groups provide instruction in spin cycling, weight training, yoga, aerobics, pilates, badminton, horseback riding, archery, and rifle training.

Whether you're looking for a chance to score some points, shoot some pool, or join a card game, the list of sports and leisure activities available in Killarney is endless.



# Golf



## Killarney Lakeside Golf Club

The beautiful waters of Killarney Lake lap against the shores next to Killarney Lakeside Golf Course. This 18-hole course boasts lush green fairways, and both traditional and links style design. Complete with beautiful scenery, rolling and level fairways, and some interesting water holes, you'll be captivated and challenged at the same time. Killarney Lakeside Golf Club also offers a licensed restaurant, a practice green and range, rental equipment, and top quality golf merchandise. Located conveniently on the outskirts of town, with a peaceful lake view, golfing can truly be a relaxing, yet formidable sporting experience.



## Pleasant Valley Golf Club

Just a 20-minute drive northeast of Killarney, the Pleasant Valley Golf Club is another must-see on your golf tour. Just head north on Hwy. 18, turn east on 253, and follow the signs. This family-owned and operated 18-hole Championship golf course offers elevations rising up 125 feet, and large undulating greens. Tree lined fairways and a meandering creek make your game fun for all skill levels. An outdoor patio offers a scenic view after a round of golf. *"Nothing Quite Like It!"*



*Nothing quite like it!*



**Nestled in the scenic Pembina Valley at the south end of Pelican Lake, this 18-hole course offers a challenge for all.**

- Large greens cut into hill sides
- 9 hole putting green
- 40 golf cart rentals
- Licensed clubhouse & restaurant
- Wheelchair accessible

Check us out on Facebook 

Corporate & Group Bookings welcome

**204-537-2487**  
[www.pleasantvalleygolfclub.ca](http://www.pleasantvalleygolfclub.ca)



*The Hidden Jewel of the South*



- Experience the Hidden Jewel of the South, an 18 hole (par 71) course, rated one of Manitoba's top ten courses to play.
- Originally established in 1923, this course has built a reputation for lush green fairways, undulating greens, and a challenging layout for all skill levels.
- Licensed restaurant / Beautiful patio
- Full driving range
- Rentals

*Catering to corporate, private, weddings and staff functions. Come play with us.*

**Located 3 kilometres west of Killarney on South Railway Street**





**Tee Times: 204-523-8277**  
[www.killarneylakeside.com](http://www.killarneylakeside.com)



## Shamrock Centre

Killarney's recreation destination is the Shamrock Centre. Completed in 2008, the state-of-the-art sports facility has already attracted several big events, including the Scotties Tournament of Hearts in January 2010, and again in January 2018.

The main floor hosts the curling and hockey arena, banquet hall, dressing rooms, concession, washrooms, bowling alley, change rooms and offices. The second floor hosts a sound room, fitness area, change rooms, elevated viewing areas and press box, walking track, washrooms, meeting rooms, and a licensed lounge with a concession.

The facility also features seating for 750 in the hockey arena and 220 in the curling rink, as well as a handicap-accessible elevator lift.

Be sure to check out Killarney's Shamrock Centre.  
It will bowl you over!



From bull riding to hockey, the Shamrock Centre has it all.



The Shamrock Centre hosts many big events, but none bigger than the Scotties, won by Team Jones in 2018.





# Activities and Attractions



Old fashioned fireworks at Pioneer Days.

## Killarney Fair

Killarney Fair runs at the Ag Grounds on June 23 and June 24. Action starts Friday evening with the chuckwagon and chariot races, along with a supper, beer garden, and music under the tent.

Saturday starts with a pancake breakfast, followed by the parade, which makes its way down Broadway Avenue, bringing with it a variety of floats and plenty of candy for the kids.



## Fair Days

**Friday & Saturday,  
June 23 & 24, 2023**  
Killarney Agricultural Grounds

- Horse & Cattle Shows • Children's Entertainment • Stage Entertainment
- Chuckwagon Races • Beer Gardens • Parade • Pancake Breakfast

**Lots of games and activities for the kids!**

For up-to-date information visit [www.killarneyagriculturalsociety.ca](http://www.killarneyagriculturalsociety.ca)

MANITOBA  
LIQUOR  
& LOTTERIES



## STAY FOR A DAY, A WEEK OR A MONTH

### KILLARNEY AGRICULTURAL SOCIETY CAMPGROUND

RESERVATIONS ACCEPTED  
**204-523-4699**

Entrance on Water Street from No. 3 Highway, from No. 18 Highway via Park Street to Water Street.



Scenic campground on Killarney Lake providing 115 sites, most with sewer and 30 amp service. Open 24 hours per day. Bathrooms and shower facilities available. Dump station on site. Daily, weekly and monthly rates. Manager on site from May 1 to September 30.

**Seasonal sites available**

[www.killarneyagriculturalsociety.ca](http://www.killarneyagriculturalsociety.ca)

Email: [killarneyag@live.ca](mailto:killarneyag@live.ca)

[www.killarney.ca](http://www.killarney.ca)





From chariot to chuckwagon racing, there's plenty of horsing around at Killarney Fair.

There's a second go-round with races on Saturday at the fair, plus homecraft displays, a cattle show, as well as the light and heavy horse competitions.

These favourites, along with popular events like the petting zoo, pig scramble, mutton bustin', watermelon eating, Killarney Idol, and more, are joined with new twists each year.

There's also plenty of food and stage entertainment running throughout the weekend, and lots of children's activities.

## Canada Day

Plans for a seriously fun Canada Day on July 1 are back, this year with The Reklaws taking the stage before the fireworks display closes out the big birthday bash.

Justin LaBrash will open up for The Reklaws, with Hicktown, Sentinel and TangleBox warming up the crowd before that.

Food trucks will be available for great grub on the grounds, and festival goers are urged to bring a lawn chair or blanket to sit on.

Tickets will be available at the gate or at [eventbrite.com](https://www.eventbrite.com).

# THE REKLAWS

## July 1, 2023

### Killarney, MB

Ag Grounds, 50 Water Ave.

*With...*

- Justin LaBrash
- Hicktown
- Sentinel
- TangleBox

Adults 13+ - \$50  
Children 6-12 - \$20

[eventbrite.com](https://www.eventbrite.com) • Shamrock Centre  
Lewis & Jones



Presented by:  
Killarney Kinsmen  
& KCEC





Heritage Home hoedown during Canada's 150th.

## Heritage Home for the Arts

The elegant Heritage Home for the Arts project was completed in 2018, after restoring and re-creating the town's century-old Farm Demonstration House, built for the farm manager's family back in the early 1900s.

A wide variety of arts and culture-related activities now take place here throughout the year – some of them outside on the house's beautiful, shady verandah. Inside, art exhibition pieces grace the walls of the beautifully finished interior year round.

## Heritage Home for the Arts

*Killarney's community arts & culture centre*

- Art exhibitions
- Performing arts
- Workshops for all ages & experience
- Rentals for special events & meetings



**Open year round**  
**Tuesday to Saturday, 12 noon to 4 p.m.**

For more information call 431-734-0394 or  
email: [ktmartscouncil@gmail.com](mailto:ktmartscouncil@gmail.com)  
[www.killarneyarts.com](http://www.killarneyarts.com)



**Killarney Turtle Mountain  
arts  
Council**



Located at 44 Water Avenue, Killarney

## Experience a bit of history



at the

## Shamrock Drive In Movie Theatre



Call for schedule throughout the summer months  
**204-523-1827**

Follow us on



[www.killarney.ca](http://www.killarney.ca)





St. Pat's weekend is always special, with a big party on the Saturday and a curling bonspiel all weekend.

## Prairie Pioneer Days

Take a look at farming the old-fashioned way, and see first hand the changes that have taken place over a century. Hosted by the dedicated Turtle Mountain Flywheel Club on July 8 and 9, Prairie Pioneer Days attracts hundreds of people who come to enjoy threshing demonstrations, log sawing, and machinery displays. Wander through a variety of displays that include a toy show, a working blacksmith shop, plus local fare and entertainment. The pride of Pioneer Days is the Sunday afternoon parade in front of the grandstand, where enthusiasts shine up their favourite antique farm implements for the finale. Make a stop at the Heritage Village as well as the Stationary Engine Museum, all focused on our rural heritage and proud prairie history.

## J.A.V. David Museum

The lavishly stocked museum displays the contents of the original Killarney Post Office and General Store. Also on display are local archives, homestead maps, cemetery records, war relics, pioneer tools and natural history artifacts, a doctor's office, plus elegant period clothing, and even granny's kitchen. New displays are featured every year. A must see. Open July and August, Tuesday to Saturday, 10 a.m. to 5 p.m. (closed at noon).

46TH ANNUAL

# Prairie Pioneer Days

**July 8 & 9, 2023**  
KILLARNEY AGRICULTURAL GROUNDS

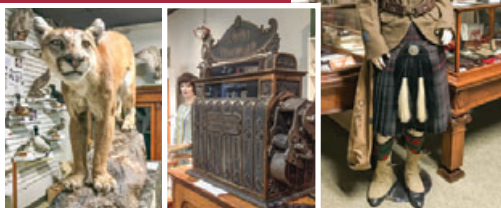
**FEATURING: 100<sup>TH</sup> ANNIVERSARY  
JOHN DEERE MODEL D**

• Toy Show • Tractor Pull • Parade • Log Sawing  
• Threshing Demos.....and much more!

**POWER MACHINERY MUSEUM**  
Open July & August 10 a.m. to 5 p.m.  
Rick 204-523-1881 • Stuard 204-523-8280

**Follow us on Facebook**

## Take a Step Back in Time



A walk through the museum will take you back in time to the general store, pioneer kitchen, war display, natural history room, and many other collections including "Shadow the Cougar."

***Come in and view our new renovations,  
see new displays and enjoy a tour.***

**J.A.V. DAVID MUSEUM IS OPEN JULY & AUGUST  
TUESDAY TO SATURDAY 10-12 & 1-5**

Other times by appointment (please call one of the numbers below)

Museum **204-523-7325** • Betty **204-523-7369**  
Ann **204-523-6444**

## J.A.V. David Museum

414 Williams Avenue, Killarney, MB

## Farmers Market

The Killarney Farmers Market provides fresh produce and much more every Saturday morning throughout the summer, next to the Broadway Ave. play park.



## Christmas in Killarney

Christmas in Killarney offers family fun and extended store hours, so you'll be sure to get a good start on the Christmas season. Santa will make a special trip to take part in the annual evening parade on Friday, December 1, and will be in town Saturday too for a meet and greet.



## Snowmobiling

Killarney is a great snowmobiling destination that connects you to 500 km of well-groomed trails.

With signs to guide the way, snowmobilers can travel through the Killarney area, and throughout southwestern Manitoba, all on one linked-up trail.

## Fun at the Drive-In

When the sun starts to set, the fun doesn't have to stop. Pull up in front of the big screen, grab some popcorn, and catch a movie at the iconic Shamrock Drive-In. Located just south of Killarney on Highway 18, the Shamrock Drive-In is one of the last of its kind in the country, and has become a favourite tradition for visitors. Come experience the nostalgia of a real drive-in theatre. The show starts at dusk.



Artist and sculptor Don Engbrecht (right) created a special installation for the Keith's Korner memorial park, at the corner of South Railway and Broadway. Below, Engbrecht's dragonfly sculpture downtown.



Dragonfly sculpture.





# Accommodations, Dining and more



Ag Campground on the bay.

## Agricultural Society Campground

The Killarney Agricultural Society Campground is ideally placed for those participating in summer festival events and beach activities. Located across the street from Erin Park on the quiet bay, you can dock your boat by a campsite with optional cable hookup. The campground also features bathrooms, showers, a dump station, a boat launch, and 115 sites, most with sewer and 30 amp service.



The Emerald RV Resort, just across the street from Killarney Beach and Splash Park.

## Kerry Park Campground

Heading out west on South Railway Street, you will find Kerry Park Campground. Kerry Park boasts 225 sites, tennis courts, a large playground area for children, and a boat launch on Killarney Lake that's away from the center of activity. It's also located just down the road from the Killarney Lakeside Golf Club. Weekly and monthly rentals are available.

## Emerald Suites Motel and RV Resort

Located behind the Emerald Suites Motel, the RV resort is conveniently located across the street from Killarney Beach. The campground features 75 serviced lots with washrooms, showers, and firewood.

Kerry Park's playground.





Fireworks to cap off Canada Day after The Reklaws.



## Wu's Restaurant

204-523-8989

**Dine In or Take Out**

523 Broadway Avenue,  
Killarney

**OPEN 7 DAYS A WEEK**

TUE-SAT 9 a.m.-8 p.m. • M & SUN. 11:30 a.m.-8 p.m.





[www.canadianwildernessinn.com](http://www.canadianwildernessinn.com)

*Stay with us!*

- 29 spacious guestrooms
- wireless internet
- 2 locations to serve you

**Killarney!**  
**204-523-4111**

220 Geates Street West  
South of the Shamrock Centre  
[killarney@canadianwildernessinn.com](mailto:killarney@canadianwildernessinn.com)

*The Killarney location is booked for June, July & August.  
Please contact us for other available dates.*

**Boissevain!**  
**204-534-7155**

Located on Hwy #10 South  
306 Mountain Street  
[boissevain@canadianwildernessinn.com](mailto:boissevain@canadianwildernessinn.com)

# Emerald Suites MOTEL & RV RESORT

- In-room Fridge, Microwave, Coffee Maker
- Air Conditioned
- High Speed Wireless
- Cable T.V.
- Propane BBQs & Picnic Tables for guests
- Restaurant & Miniature Golf adjacent
- **1 Bedroom Light Housekeeping Suites**
- **All rooms completely renovated**
- 75 Serviced RV/Campground Sites  
~ Seasonal & Daily



**Located across the street from the beach on beautiful Killarney Lake  
and the ERIN PARK SPLASH PARK!**

***We look forward to  
meeting you.***

Owned & Operated by Southwest Resorts Inc.  
RICHARD A. KAUTZ, President, CEO & Gopher  
103 Water Avenue • P.O. Box 1600, Killarney, MB R0K 1G0  
**PH: 204-523-4215 • 1-866-523-4215 • FX: 204-523-3396**  
[rakautz@emeraldisle.ca](mailto:rakautz@emeraldisle.ca)      [www.emeraldisle.ca](http://www.emeraldisle.ca)





## THE OAK & OWL CAFÉ

508 Broadway Avenue

Monday - Saturday  
8:30 AM - 4:00 PM

Come visit us for coffee, tea,  
and fresh-baked treats

# SUBWAY

eat fresh.®

Breakfast sandwich/wrap  
Sandwich • Salad • Wrap  
Rice Bowl • Soup



322 Broadway Ave., Killarney  
204-523-8520

MON-FRI 7:30 a.m.-9 p.m.  
SAT-SUN 9 a.m.-9 p.m.

## Erin Inn Motor Hotel



- Cold beer vendor
- Pub with pool tables & 8 VLTs
- 14 newly renovated rooms with AC & free Wi-Fi

Daily lunch &  
supper specials

STAY



EAT



PLAY



543 BROADWAY AVE., KILLARNEY, MB

**204-523-4651**

[erininnhotel@gmail.com](mailto:erininnhotel@gmail.com)

[www.killarney.ca](http://www.killarney.ca)

## THE BEACH HUT

RESTAURANT  
& MINIATURE GOLF

- Wraps
- Salads
- Chili
- Hot Dogs
- Fries
- Ice Cream
- Shakes
- Sundaes

Water Street off Hwy. #3  
Killarney, MB

**204-523-8880**

Email: [beachhut@live.com](mailto:beachhut@live.com)



EAT IN OR TAKE OUT  
(DELIVERY AVAILABLE)

OPEN 7 DAYS A WEEK

**BEST  
BURGERS  
IN TOWN!**

# Health Care



Garden courtyard at Bayside Personal Care Home.

Nothing is more important than the health and wellness of those visiting Killarney, and those who call the community home. Providing the best health care in a comfortable rural setting is one of the community's top priorities.

Highly qualified medical staff, including doctors, nurses and technicians, create a team that provides professional treatment and services to Killarney-Turtle Mountain and the surrounding area.

Killarney is a regional centre for the delivery of health and community services.

The Tri-Lake Health Centre, a modern facility with an attached personal care wing, provides the best in medical care. Acute care, along with 24-hour urgent care services, is available at the local hospital, along with palliative care and a host of other important services including a lab facility, ultrasound unit, and a state-of-the-art xray unit. A team of doctors takes appointments, including walk-ins, at the adjoining medical clinic.

This is also the site for MB Telehealth, which links patients from southwest Manitoba to specialists across the province via live video and audio.

A long list of other health professionals provides a variety of medical services to the community. Dentists, optometrists, registered massage therapists, and a chiropractor serve the needs of patients from Killarney and the surrounding area.

The skills of pharmacists, physiotherapists, and dieticians are also readily available. The public health unit oversees community care from prenatal classes to care for the elderly.

## Medical/Nursing

The Acute Care hospital has 22 beds, three observation beds, and two treatment rooms.

Bayside Personal Care Home next door has 60 beds, and a beautiful interior courtyard for residents.

These two areas provide opportunities for physicians, registered nurses, licensed practical nurses, and health care aides.



## Killarney Medical Clinic and Tri Lake Health Centre (TLHC)

86 Ellis Drive  
Clinic 204-523-4609  
TLHC 204-523-4661

The health centre serves an area of approximately 5,800 people. From May long weekend to September long weekend, approximately 200 cottages by Killarney Lake and 1,000 cottages surrounding Pelican Lake are occupied. As well, numerous campgrounds in the area are filled to capacity with hundreds of visitors. During the summer months the population of Killarney-Turtle Mountain Municipality doubles in number.





Killarney Airport is used for emergency transfers by STARS helicopters and other medevac aircraft, like this Twin Otter. Patients can be transported quickly to centres such as Winnipeg.

## Emergency Services

Safety is a priority in Killarney as well. The RCMP staff a detachment in the community, and police, along with ambulance, fire, and rescue, provide excellent emergency services to the community and surrounding region. STARS air ambulance and LifeFlight services are also available out of the local airport, just minutes south of Killarney.



Grand opening of the new fire hall in 2021.



The Killarney Turtle Mountain Fire Hall, completed in 2020.

Tri-Lake Health Centre's ultrasound suite.



## Killarney Pharmacy

Caring for our Community.  
Prescriptions • Health & Beauty Aids

**204-523-4273**

In Killarney Place mall  
530 Williams Avenue



**RxPharmaChoice** *Advice for Life*

[www.killarney.ca](http://www.killarney.ca)

# Education & Childcare



Killarney School's running club.

## Turtle Mountain School Division

435 Williams Avenue • 204-523-7531

### Killarney School

417 King Avenue • 204-523-4696

Operated by Turtle Mountain School Division, the school offers education for kindergarten to Grade 12, plus the Killarney Nursery School. The school has a speech language therapist, a division psychologist, a counsellor, plus class video-conferencing between division high schools.

### Lakeside Christian School

237 Hammond St. • 204-523-8240

The Lakeside Christian School has been at its present location since 1999. It is funded independently, and offers kindergarten to Grade 12.



Killarney School toots their horn with an excellent band program.



Lakeside Christian School (above) and Killarney School (below) take the stage with their plays.



Over 26,000 items to borrow  
Free Wi-Fi • Free computer access  
Large used book sale

Tuesday to Friday 9 a.m.-5 p.m.  
Saturday 9 a.m.-4 p.m.

**204-523-4949**

318 Williams Ave.  
[www.lakelandregionallibrary.ca](http://www.lakelandregionallibrary.ca)





## **Turtle Mountain Adult Education**

510 Finlay Street • 204-523-4492

The adult education centre has been in operation since 1998, providing quality education for mature students earning their high school diplomas. The centre also provides assistance in connecting to post secondary education.

## **Kiddie Corner Early Learning Centre**

711 Mountain Avenue • 204-523-8940

Licensed child care for ages 12 weeks to 6 years in our early learning centre. Licensed school-age care for ages 6 to 12 years in their program located at Killarney School.

## **Roots of Early Learning Centre**

305 Broadway Avenue • 204-554-8687

Trained staff, with four infant spaces and 16 preschooler spaces available. Casual, full-time and part-time. Hours: 6:30 a.m. to 5:45 p.m.

## **Killarney Nursery School**

Located at Killarney School  
204-523-1566

Killarney Nursery School accepts children aged 3-4 years of age. Leadership is provided by qualified staff. Subsidies are available.



## **Lakeland Regional Library**

Ample, up-to-date book and periodical collection, access to Internet, films, videos, foreign language programs, eBooks and talking books. Turn to page 24 for location and more information.



# **Places of Worship**

Killarney is a community with a strong sense of spirituality and faith. The church plays an important role for many people who live in Killarney, or spend time visiting the area.

With churches serving a variety of denominations, most people are able to fill their spiritual needs locally. The thriving church community can be seen in the many expanding and renovated houses of worship built in the last several years.

From worship services to special programs for youth, men, women, and seniors, the churches offer a variety of avenues to get involved and make a connection with others.

**Calvary Baptist Church** - 312 Mountain Ave.

**Free Methodist Church** - 333 Hossack Ave.

**Holy Trinity Anglican Church** - 204 Fletcher St.

**Kingdom Hall of Jehovah's Witnesses** - Hwy. 3

**Killarney Mennonite Church** - 66 Bay Ave.

**Killarney United Church** - 432 Williams Ave.

**Lakeview Community Church** - 616 Lakeview Ave.

**New Life Assembly** - 411 Finlay St.

# Retirement or Relocation



Heading home after school down leafy streets.

Killarney is the perfect place to retire or relocate.

It is a community ready to welcome newcomers – the door is wide open!

With rapidly improving technology, it is easy to do business globally while choosing a home base locally. The world is at your fingertips, while you can enjoy small town life and all the benefits it brings. An affordable cost of living, in a safe and growing community, top the list of things attracting new people to Killarney.

There is also a growing demand for professionals in a number of fields, including health care, and

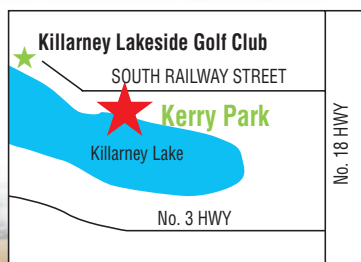
a constant need for skilled trades workers for a variety of local businesses and services.

Maybe you're looking for a community where you can relax and enjoy the retirement phase of life.

Affordable housing in a scenic community makes Killarney a popular place for retirees.

Access to excellent medical care, and a long list of leisure activities and programs aimed to keep seniors busy and active, along with all the shopping and services you need right down the street, make it an easy choice to relocate to Killarney.

## KERRY PARK



Full service site:

\$35/day

\$210/week

\$700/month

\$1,800/seasonal

- 225 Sites
- Tennis Courts
- Children's Playground
- Beach Volleyball
- Washrooms/Shower
- Boat Launch
- Firewood
- Drive-thru Sites
- Close to Golf Course
- Weekly & Monthly Rentals



OPERATED BY THE  
KILLARNEY KINSMEN

For more information contact managers Ron & Cheryl Burke 204-523-6000 or visit [kerrypark.ca](http://kerrypark.ca)

[www.killarney.ca](http://www.killarney.ca)



# Shopping & Services



## Killarney's popular annual Sidewalk Sale.

A thriving business centre, Killarney is the hub for a variety of shopping and services for a large trade area in the southwest corner of Manitoba.

If you're just in Killarney for a visit, or you call the community home, you can find everything you need – and more – right here. Whether you're looking for the perfect keepsake from Killarney, local foods, or the ingredients for a lakeside barbecue, you'll find it in town.

The business district boasts a major car dealership, vehicle and tire repair, florists and gift shops, investment and real estate offices, three financial institutions, bakeries, furniture, a shoe store and clothing stores,

hairdressers, a post office, a meat market and abattoir, computer sales and service, plus grocery and hardware stores, and a large commercial greenhouse and garden centre, are just a small sampling of the retail outlets that can be found in Killarney's downtown.

Courteous service, ample parking, and easy access all contribute to the growth of the thriving retail sector. And the town and surrounding area also offer many specialized services, including building centres and commercial printing.

Hotels, restaurants and convenience stores serve both the local residents of the community, and Killarney's many visitors. With more than 175 businesses and services ready to serve you, Killarney can meet your every need.

But there's always room for more. Killarney is ready for industrial expansion, and the door is always open for someone looking to establish a business to serve a niche market.

With rapidly advancing technology, you can do business around the world, while enjoying the benefits of living in a quiet, safe and affordable community.

In Killarney the global economy is at your fingertips, while the beach and golf course are in your backyard.

## Big city style in a great small town



## Gwen's Trends

LADIES & MENS WEAR

In Killarney Place mall  
530 Williams Avenue, Killarney, MB  
PH. 204-523-8162 Email: trends@mts.net



**Buying or Selling?**  
 Helping you is what I do.  
*Serving Killarney and area*

**ROYAL LEPAGE**  
 MARTIN-LIBERTY REALTY  
INDEPENDENTLY OWNED AND OPERATED

**Debbie Nichol • 204-523-0836**  
**DebbieNichol@royallepage.ca**



**Home  
hardware**

8:30 A.M.-5:30 P.M. MON.-SAT.  
**204-523-4635**  
 509 Broadway Avenue  
 Killarney  
**www.homehardware.ca**


**Vervain**  
*Greenhouse  
& Garden Center*

*Come visit us  
 during our Spring, Fall  
 & Holiday Seasons!*




*Follow us on*  
 


204-523-4890  
 337 Norquay Ave. Killarney, MB.



**Sales and Leasing**



**Parts and Service**

 **Chapman's** *Your Satisfaction  
is our Future*  
 Killarney, MB  
**1-204-523-4674 Toll Free 1-888-309-8162**  
**www.chapmanmotorsgm.ca**

**KILLARNEY'S**  
**TOY STORE!**



**Trinkets & Treasures**  
 Large selection of  
 • Lego • Nerf • Barbie  
 • Crafts • Puzzles • Games  
 • & more!

MON-FRI 9-5:30 • SAT 9-5  
 

**Trinkets & Treasures**  
 Killarney Place Mall • 204-523-4572





Photo credit: Lake and Valley Photography



SPIN • SPIN & BARRE • BARRE

FIND US ON THE MINDBODY APP TO  
VIEW OUR SCHEDULE & BOOK YOUR CLASS  
\*\*\* COME SWEAT WITH US \*\*\*

Killarney, MB  
549 Broadway Ave  
204 523 0266

Notre Dame, MB  
Coming May 2023  
204 898 5354

Neepawa, MB  
342 Mountain, Ave  
204 841 0913



rhythm.cycle



Rhythm Cycle Club

# THE Carpet WAREHOUSE LTD.



- Carpet
- Vinyl Flooring
- Luxury Vinyl
- Ceramic Tile
- Hardwood Floors
- Para Paint
- Hunter Douglas Window Coverings

204-523-5667 • 1-800-325-8066

442 North Railway St.  
Killarney



[www.thecarpetwarehouse.ca](http://www.thecarpetwarehouse.ca)

**Service, Protection  
& Peace of Mind**



**REAL ESTATE**

**INSURANCE**

Home • Auto • Life

**FINANCIAL PLANNING**

GICs • RRSPs • RESPs • RRIFs  
TFSA's • Investments



**Desjardins**  
Financial Security®  
Investments Inc.

532 Broadway Ave. Killarney, MB  
204-523-4922 • Toll Free 1-866-355-8292  
[www.lewisandjonesgroup.com](http://www.lewisandjonesgroup.com)

[www.killarney.ca](http://www.killarney.ca)

**LET US HELP YOU  
FIND A HOME**



**Curtis Dickson**  
Cell 204-523-6321



**Marlee Cline**  
Cell 204-523-1831

[www.lewisandjonesgroup.com](http://www.lewisandjonesgroup.com)  
[www.marleesellsrealestate.ca](http://www.marleesellsrealestate.ca)



**WELCOME ALL SENIORS!**

## New Horizon Centre

520 Mountain Avenue, Killarney

## Shamrock Billiards

518 Mountain Avenue, Killarney



Drop in and join the activities provided:

Floor shuffleboard • Cribbage • Crafts  
Pool & Snooker • Cards • Games • Exercises  
Puzzle & book lending library  
MINIMAL MEMBERSHIP & PARTICIPATION FEES

*We have you covered!*

HAIR • PEDICURES/MANICURES • SPRAY TAN  
BODY SUGARING • HENNA BROWS  
LASER HAIR REMOVAL



Pilates & Tai Chi  
with a Certified  
Fitness Professional

www.007stylestudio.com

517 Williams Avenue, Killarney

Text or call to book  
**204-523-1547**

or for more information



**CENTURY 21**  
Westman Realty Ltd.



Arlene Klassen  
204-523-6092



Deb Robins  
204-523-2334

Residential  
Lakeshore  
Commercial  
Acreages • Farms

www.arleneklassen.com  
www.debrobins.com

Visit us in Killarney Place mall • 204-523-7088

## Killarney Laundromat

9 Washers including 1 Oversize Washer  
for Sleeping Bags & 10 Dryers  
All machines cleaned & checked daily

Located 1-1/2 blocks east of Post Office on  
Finlay in beautiful downtown Killarney, MB

**OWNER/MANAGER JOHN EVANS**

Summer hours: April 1-October 31 - 7:30 AM - 10 PM

Winter hours: November 2-March 31 - 9 AM - 9 PM

## For all your PRINTING NEEDS



Business Cards • Letterheads • Envelopes  
Brochures • Placemats • Programs  
Newsletters • Menus • Flyers • Posters  
Social Tickets • Photocopying • Web Printing  
...and more!

*Ask us about full colour digital imaging*

**The  
Guide**

204-523-4611

Email: [printing@killarneyguide.ca](mailto:printing@killarneyguide.ca)  
336 Park Street East, Killarney

## A Beautiful Place for Flowers and Gifts



**Community Florist  
& Gift** 204-523-7059

OPEN MON-FRI 9:30 - 5:30 • SAT. 10 - 3  
IN KILLARNEY PLACE MALL

[www.killarney.ca](http://www.killarney.ca)



**Killarney Professional Building • 405 Broadway Avenue**

K I L L A R N E Y  
**DENTAL**



Dr. Danielle Mansfield, DMD • Dr. Jessica Armah, DDS • Dr. Brett Embers, DMD  
[www.turtlemountaindentalgroup.ca](http://www.turtlemountaindentalgroup.ca)    **204-523-4601**    [email@killarneydental.com](mailto:email@killarneydental.com)



**KILLARNEY OPTOMETRIC CENTRE**

*Life is worth seeing!*



**204-523-4613**

Dr. C. DeCock O.D., M.S., F.A.A.O. • Dr. D. McGill O.D.

[killarneyvision.com](http://killarneyvision.com)



[kvseyes@gmail.com](mailto:kvseyes@gmail.com)

[www.killarney.ca](http://www.killarney.ca)

Shopping • Services **31**

Flowers are always a good idea



*Fresh Cut Flowers*

*Wedding Florals*

*Sympathy Arrangements*

*Artisan Gifts*



204-523-7388

[www.sweetpeaandwillow.ca](http://www.sweetpeaandwillow.ca)

516 Broadway Avenue  
Killarney, MB



The best selection of footwear  
in southern Manitoba

**\$20 off** ON REGULAR PURCHASE  
OF \$100 OR MORE  
Some restrictions apply. Expires February 18, 2024.



**SHOES & M'ORR**

204-523-7248

VISIT US IN THE KILLARNEY PLACE MALL  
[www.shoesandmorr.ca](http://www.shoesandmorr.ca)

# R Bearing & Power Ltd.



Agricultural and Industrial Parts Supply

**907 Industrial Drive, Killarney, MB • 204-523-8575**  
(beside Southwest Vac Services)



# MARVAL AUTO BODY

Complete Auto  
Body Service



**DAVID KINLEY**

434 North Railway St.  
Killarney

Ph: 204-523-4974  
Fax: 204-523-7598

# ATM AVAILABLE

Visit us at 110 Finlay Street.



**Westoba**  
CREDIT UNION LTD.

westoba.com  
1-877-WESTOBA



**For all your  
equipment  
rental needs**

We are a Hutterite rental centre located southwest of Killarney, MB offering a large variety of tools and equipment for contractors or home owners.



- Hand-held / Power Tools
  - Scaffolding
  - Janitorial
  - Landscaping & Yard Maintenance
  - Concrete Equipment
  - Shop Tools
  - Trailers
  - Lighting Equipment
  - Building Tools
  - and a whole lot more!
- 100s OF TOOLS & PARTS**

**EQUIPMENT SALES AVAILABLE – AUTHORIZED DEALER**



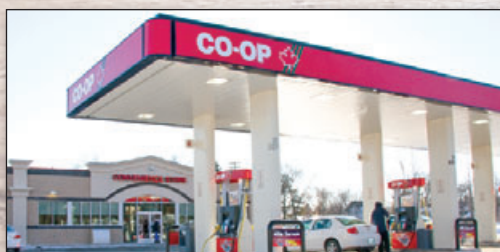
## MAYFAIR COLONY FARMS LTD.

Box 1360, Killarney, MB R0K 1G0

**204-523-0662**

email: larrywayfairrentals@gmail.com

[www.wayfairrentals.ca](http://www.wayfairrentals.ca)



## KILLARNEY GAS BAR

320 BROADWAY AVENUE | 204-523-5051

MON-SAT 7:00 a.m. - 10:00 p.m. | SUN 8:00 a.m. - 10:00 p.m.



## KILLARNEY FOOD STORE

330 BROADWAY AVENUE | 204-523-4653

MON-FRI 8:30 a.m. - 8:00 p.m.

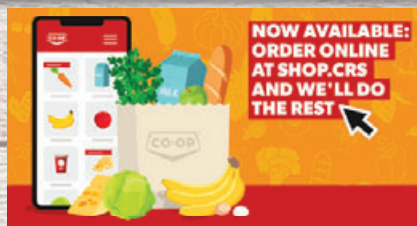
SAT 8:30 a.m. - 6:00 p.m. | SUN Noon - 6:00 p.m.



## CARDLOCK/BULK PETROLEUM

15 NEELIN STREET | 204-523-6124

24 HOURS, 7 DAYS A WEEK



**NOW AVAILABLE:  
ORDER ONLINE  
AT SHOP.CRS  
AND WE'LL DO  
THE REST**



**Boundary**

[boundaryco-op.crs](http://boundaryco-op.crs)



From Hunter Brothers (above) and Trevor Panczak (below), who performed last Canada Day, to Jim Cuddy and Sam Polley (right), who rolled through town in January, Killarney is always ready to entertain.



**CENTENNIAL  
FARM SUPPLY LTD.**

- CardLock
- Propane
- Lubricants
- Napa brand Tools
- Welding Supplies
- Fuel Storage Tanks & Equipment

**204-523-4938**

**437 Finlay Street E • Killarney**

**GOODYEAR**  
Get there™

# Killarney Tire Service

SEE US FOR ALL YOUR AUTOMOTIVE NEEDS.

***We're more than just tires.***

- Windshields
- Safeties
- Brakes
- Alignments
- Qualified Auto Mechanics on staff



**204-523-7591**

509 Fletcher  
Street East  
Killarney, MB





# Agriculture



Inland grain terminals load up railway cars.

The Municipality of Killarney-Turtle Mountain and surrounding area are deeply rooted in agriculture. This industry, which serves as both an economic and cultural cornerstone, has stood the test of many changes and challenges for more than a century. Both the town and the surrounding rural area continue to prosper and grow as an agribusiness centre.

Flowering, fragrant canola borders corn, wheat, barley and oats in farmers' fields. Numerous specialty crops, including soybeans, millet, and sunflowers, are also grown.

Producers from a large trading area come to Killarney for the inputs they need to grow a strong and healthy crop, to upgrade or service their equipment, and to market their commodities.

Known as the wheat capital of Manitoba, Killarney features three inland grain terminals and two state-of-the-art feed mills. Implement dealerships representing major manufacturers are located in Killarney, in addition to machine and welding shops and modern service centres.

There is a well-known auction mart and a veterinary clinic to accommodate the needs of numerous livestock producers.

Agribusiness is an integral part of the local economy, which includes large seed and seed cleaning operations, and numerous hog barns.

The agricultural community is constantly working to keep up with changing technologies, tap into food production trends, and is strongly supported in their efforts to add value to their products.

Killarney has a plan to take advantage of any opportunity that finds a fit with the community.



Killarney's \$30 million HyLife feedmill was completed in the summer of 2018.



**ROCKY  
MOUNTAIN  
EQUIPMENT**

204-523-4644  
KILLARNEY  
rockymtn.com



QUALITY  
PARTS • SALES • SERVICE

[www.killarney.ca](http://www.killarney.ca)

**MAZERGROUP**



204-523-4414  
KILLARNEY

[www.mazergroup.ca](http://www.mazergroup.ca)

*Big city atmosphere  
...small town feel*



**Restaurant • Banquet Room  
Marketplace**

**Open 7 Days a Week**

**204-523-7782**

**In the Killarney Place mall**